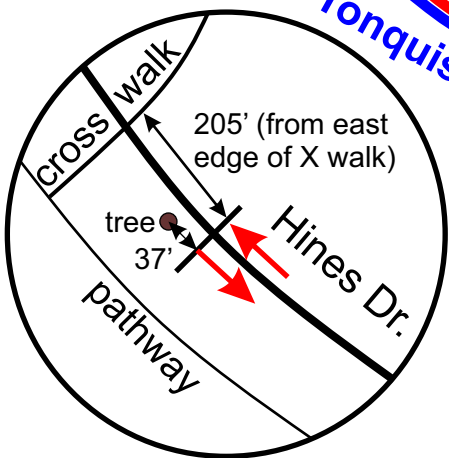
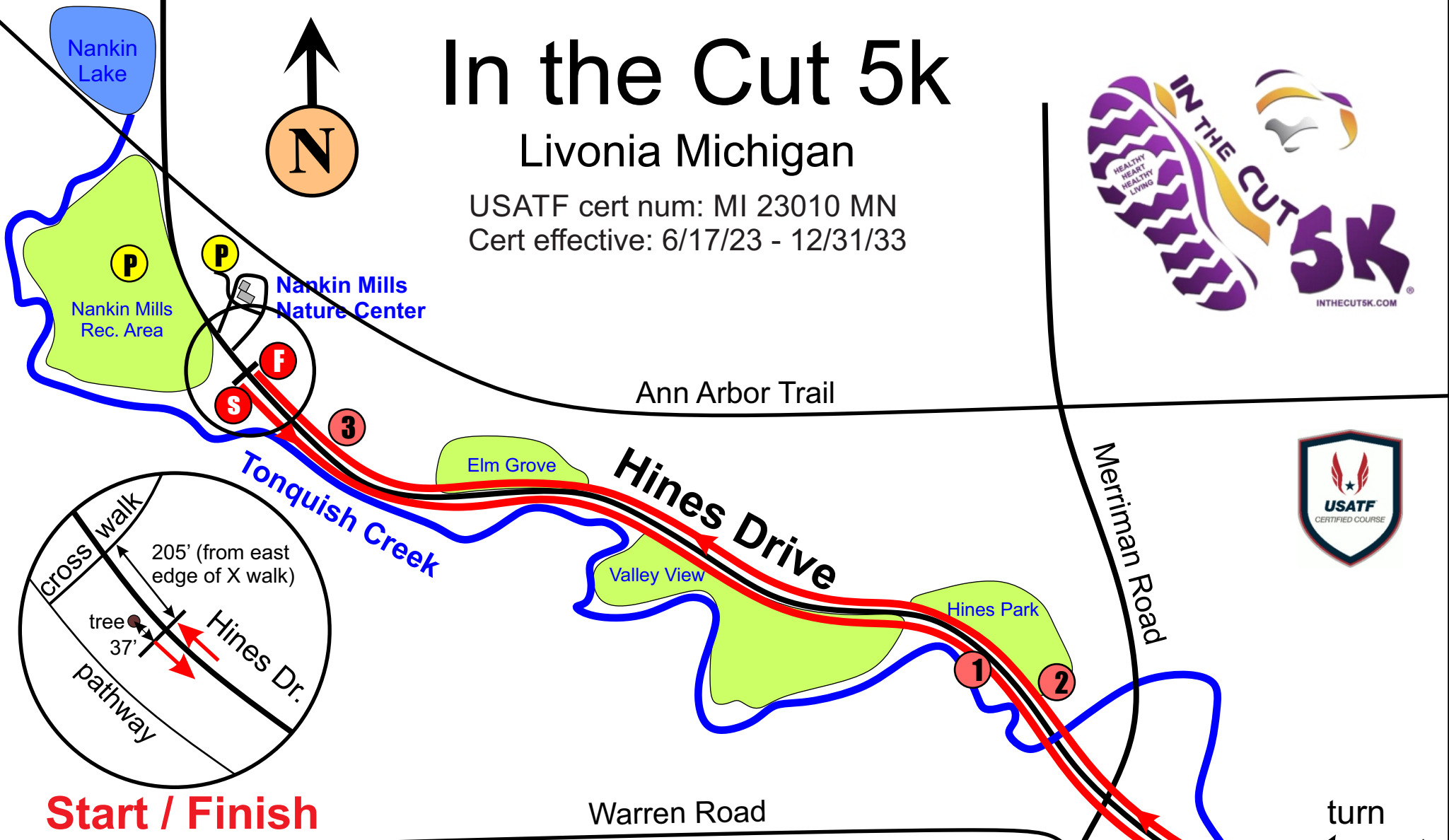
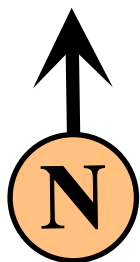


In the Cut 5k

Livonia Michigan

USATF cert num: MI 23010 MN
 Cert effective: 6/17/23 - 12/31/33



Start / Finish

Map Key:

- 1** 5K mile markers
- S** Start/finish lines
- P** Parking

H. Wolff
6-17-23

Course notes:

Out and back course.
 Runners get entire road, with
 outbound on south side,
 inbound on north side.

Turnaround is in Maple Grove parking area. Simply run tangents around the island. Runners get entire road in turnaround loop (ie not divided there).
 (Course is on the road, NOT on the shoulder. Cones used to mark edge of course.)

Mile locations:

- Mile 1:** In middle of small parking lot on north side of road
- Mile 2:** ~60 feet past west edge of Hawthorne Drive
- Mile 3:** 580 feet before finish line

Hal Wolff
runlikehal@yahoo.com